

Routine Parameters

ALB	ALP	ALT	AMY	AST	Ca	CHO	CRE-ENZ	DBIL	FE	GGT
HDL-C	LDH	LDL-C	Mg	IP	TBIL	TG	TP	UA	UREA	UP

Specialised Parameters

1,5-AG	α-HBDH	β-Hb	AAT	AMM	ACE	ADA	Anti-CCP	ApoA1	ApoB	ASO
C3	C4	CHE	CK-MB	CK-NAC	CKMB-MASS	CRP	Cu	CYS-C	D-D	ETOH
Fer	FRUC	G6PD	HbA1c	HCRP	HCY	IgA	IgE	IgG	IgM	LAC
Lp(a)	LPS	mALB	NAG	PALB	PCT	PYR	SA	SAA	RF	TBA
UIBC	Zn									

Specifications

System	Category	Fully automatic chemistry analyzer
Function	Throughput	240 tests/hour (Without ISE) 315 tests/hour (With ISE)
	Methodology	End point, Fixed Time, Kinetic
Sample, Reagent prob and mixer	Reagent	Closed System
	Reagent Position	40
	Sample Position	40
	Minimum Reaction Volume	150 µL
	Carryover	< 0.005%
	Water consumption	Low to 5L/Hours
	Maximum Reaction Volume	5000 µL
	Principle	Colorimetry, Turbidimetry
	Sample Mode	Random Access, STAT sample priority
	Sample Volume	02-50µL, step by 0.1 µL
	Sample Disk	40 positions
	Sample/Reagent Prob	One prob for sample and reagent with liquid level detection
	Reagent Volume	R1: 150-450µL, R2:10-300µL, step by 0.1µL
	Reagent Disk	40 Reagent positions
	Reagent Bottles	Compatible with AU and hitachi bottles
Reaction System	Mixer	High Polished nano material mixer
	Reaction Cuvettes	81 Cuvettes, Semi-Permanent rigid UV special plastic cuvettes
	Wash Station	6-Step auto wash station
	Reaction Temperature	37±0.1°C
	Heater	Metal Thermostat for reaction disk
Optical System	Lamp	Halogen Tungsten lamp, 12V20W, about 2000hours
	Filter	FMSS (Full-Sealed Matrix Spectrometric System)
	Wavelength	8 wavelengths; 340,405,450,510,546,578,630,670 nm
	Resolution	0.0001 Abs
	Linearity	0.0-3.5 Abs
	Accuracy	0.5A: <± 0.2Abs. 1.0A: <±0.04Abs
	Stary Light	> 4.5
	Stability	< 0.01 Abs/Hour
	CV	< 1.5%
	Half Band Accuracy	≤± 2nm
Cal & QC	Detector	Photodiode detector array
	Calibration Mode	One point linear, Two point linear, Multi-point Linear, Logit-4P, Logit-5P, Spline, Exponential, Polynomial
	Calibration Curve	Calibration Curve auto check, auto curve fitting
	QC Rule	L-J graph with Westgard multi rule, Cumulative sum check, Twin plot
	QC warning	Out of control auto warning, data automatic record and analysis
Software	Operating system	Windows 7/10
	LIS Interface	Bi-LIS Interface
	Print Mode	Multi default formates, User-defined formats
	PC Configuration	CPU 2.5GHz, memory 4GB, Hard disk 500GB
Other	Dimension	855(L) x 550(D) x 580(H)
	Power Supply	AC 100-240V, 50/60Hz ± 1 Hz, ≤350VA
	Net Weight	75 Kg
	Optional Parts	Barcode Reader, ISE Module, PC with Touch Screen.

ZN CK-MB ASO
AMM Fer CRP
LAC mALB
ApoA1 ADA

β-Hb FRUCT
B TBA
ApoB UIBC
ACE



CYS-C
D-D
IgE
HbA1c
CK-MB
PCT
Anti-CCP

G6PD
HCY
RF
LPS
CK-NAC

With All routine parameters

Expect the Expertises

Exclusively Marketed by:



REDCELLS DIAGNOSTICS PVT. LTD.

Mob No : +91 90820 32721

Email: redcellsdiagnostics@gmail.com Website: www.redcellsdiagnostics.com

RC240

Expertises for all your specialised needs



TRUST

Closed system with validated protocol for all specialised products



CONVENIENT:

Barcoded* & smaller system pack reagents



AFFORDABLE

Affordable Cost for maximum specialised tests.



TOTAL SOLUTION

Liquid stable Control and calibrator are available with maximum assays.



CORRELATION

Show excellent correlation with other instruments & competitive reagents



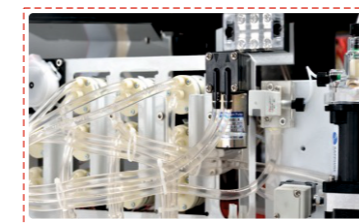
User Friendly Software

- Easy to operate with iconic interference
- Easy Reagent settings
- Support batch request, panel/calculation tests
- Editable template for Reports
- Manual dilution, auto dilution and post dilution
- Auto Troubleshoot failure and recovery
- Easy rerun and restore test



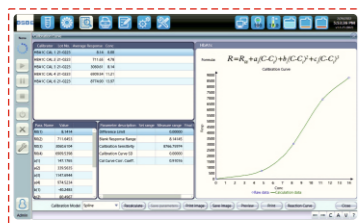
Reaction System

- 81 High light transmittance reaction cuvettes
- Metal thermostat ensures stable temperature: 37°C
- Auto Water blank test ensure precise results



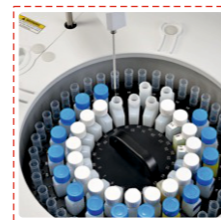
Fluid System

- Branded components including: IWAKI pump, SMC valve, Ceramic syringe, THOMAS peristaltic pump, Tygon tubing and CPC tubing couplings
- Built-in degrasser ensures precise sampling.



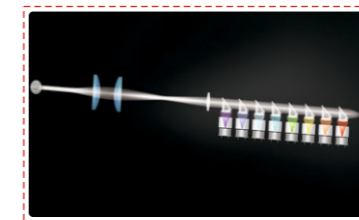
Calibration and QC

- Multi calibration mode
- Multi QC rule: L-J Graph with Wastgard rule, Cumulative sum check, twin plot



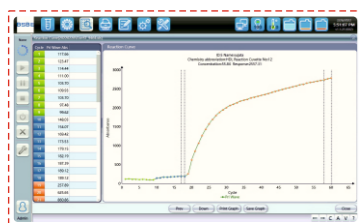
Sample and Reagent Disk

- Reagent refrigerator- 4-12°C
- Noise free water-cooling design
- 40 Reagent Positions
- 40 Sample Position with STAT priority option
- Reagent and Sample barcode scanner (Optional)



Optical System

- Halogen tungsten lamp with about 2000 Hr Lifetime
- Full-sealed matrix spectrometric system
- Simultaneously dual wavelength detection to avoid interference



Real Time Monitoring

- Real time reaction curve monitoring
- Sample, Reagent, and reaction cuvette status.
- Lamp intensity, water tank and waste tank status
- Reaction disk and Reagent disk temperature monitor



Sampling System

- High polished nano material sample and reagent prob
- High accuracy ceramic syringe
- Auto depth adjustment
- Liquid level detection, Vertical and horizontal collision protection



Anti-Contamination Design

- 6 Step laundry system
- High polished nano material mixer
- Automatic prob and mixer washing
- Intelligent Anti-contamination program setting